

it may exist for a few seconds or it may go on indefinitely (2011)

James Saunders

programme note

it may exist for a few second or it may go on indefinitely (2011) is scored for flute, cello, and bowed metal. Each player performs a repeated single action resulting in a series of unstable held sounds. The title is taken from Robert Barry's *A work submitted to Projects Class, Nova Scotia College of Art and Design, Fall 1969*. The piece is part of the series *divisions that could be autonomous but that comprise the whole* (2009-) and was written for handwerk.

performance information

flute use minimal breath pressure, such that the sound is barely audible and unstable; sound should have a clear breath/noise component

cello use minimal bow speed, such that the sound is barely audible and unstable; sound should have a clear bow/noise component

bowed metal use minimal bow speed, such that the sound is barely audible and unstable; sound should be predominantly noise based, but may contain pitch components

bow, thin sheet of metal at least 200mm square:
clamp or hold metal sheet on table with at least 100mm hanging over the edge
bow edge of metal

o-pppp (---) on the edge of silence; sound will stop and start uncontrollably

times refer to durations of sounds and silences (no action marked)

the sounding part of the page should last between 6-10"

the start and end points of the sound must fall within 15-17" of the page timing

the pages are played simultaneously, with all players starting their pages at the same time

the length of the sound should not be agreed between players; it should be decided individually, and may be different each time if the page is repeated

the page should be played at least once

if repeated, the repetition follows on immediately with no break

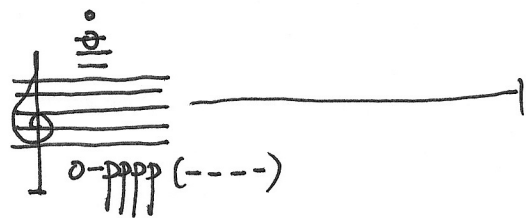
players should agree in advance how many times the page will be repeated

use a stopwatch

it may exist for a few second or it may go on indefinitely written for handwerk.

flute.

15-17"



6-10"

15-17"

cello.

15-17"

I. \diamond

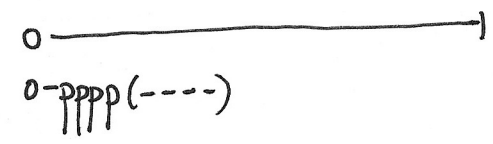
o-pppp (- - - -)

6-10"

15-17"

bowed metal.

15-17"



6-10"

15-17"

[40"]