

**reassigned #1 (2016) / James Saunders**

string trio (vn.vla.vc) with ensemble of at least six players with bowed objects  
duration: c.10 mins

string trio

The string players use the modules provided on their score pages.

These may be played in any order.

There should be no gap between each module (although most start and/or end with measured silences).

Players act independently and do not need to synchronize the beginning of each module.

Each module must be played once.

ensemble

Each player has a bow and a selection of c.3 resonant objects (e.g. empty tin can, wooden box, pottery jar).

When bowed, the objects should produce a combination of pitch and noise tones.

The ensemble plays sustained tones by bowing their objects.

Each sound should be very quiet, bordering on silence.

Each ensemble player independently starts and ends a bowed sound in synchronization with a short sound

made by one of the string players.

After commencing a sound, ensemble players may wait for any number of intervening short sounds played

by one of the string players before selecting a sound that acts as a cue to end their sound.

If a string player plays a sustained sound, all ensemble players immediately stop their current sound.

They may resume when the string player's sustained sound stops.

The piece ends when the string players have completed their modules.

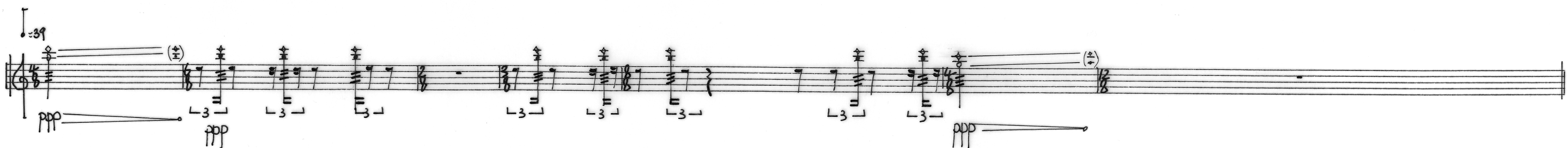
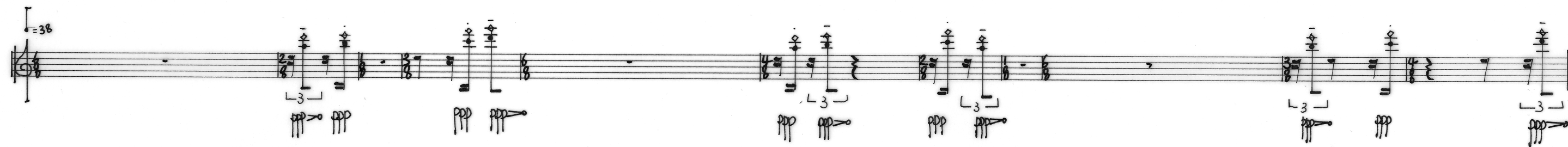
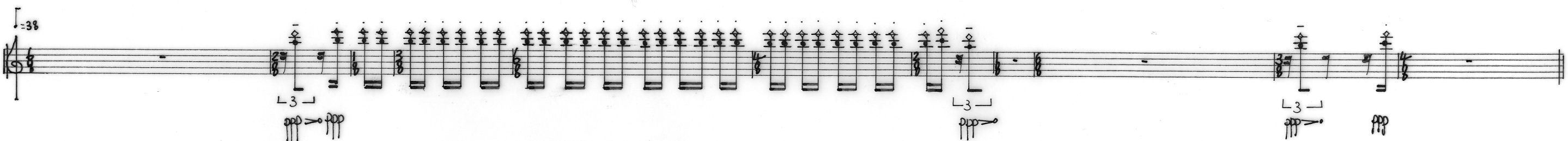
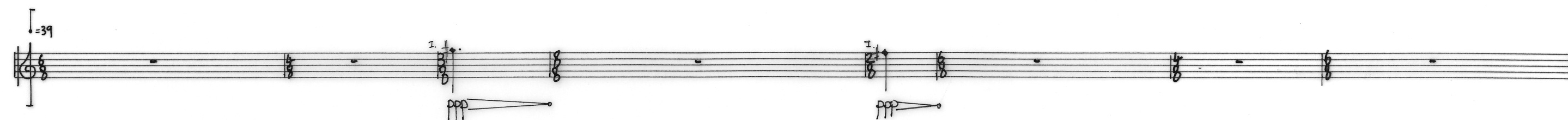
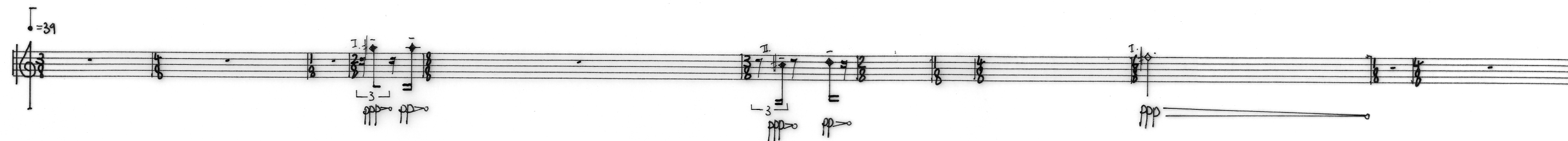
If one of the ensemble players is left sustaining a sound, one of the string players may repeat their last

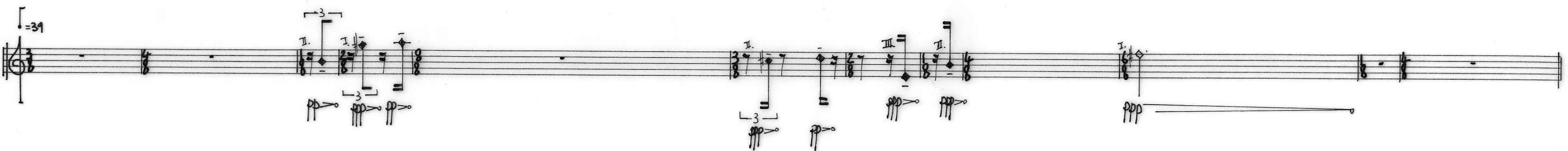
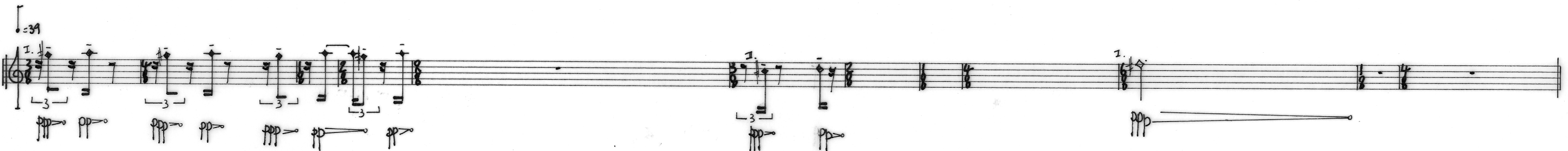
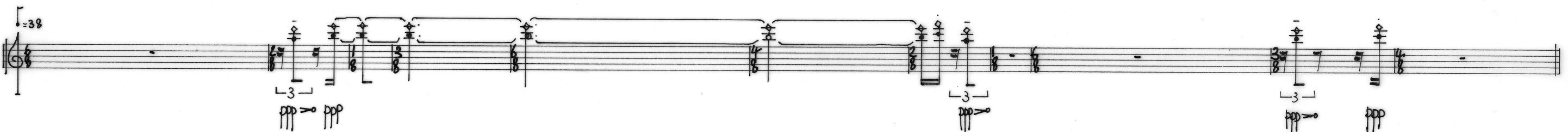
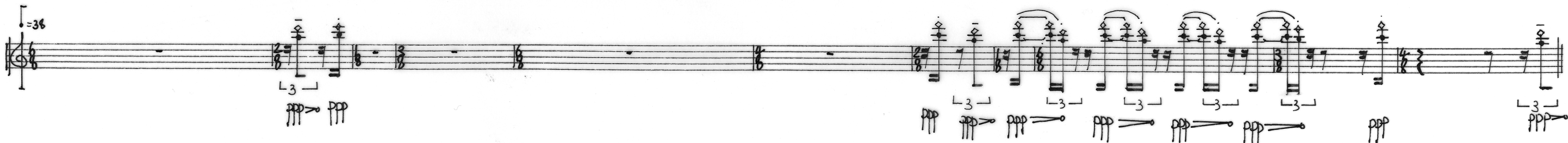
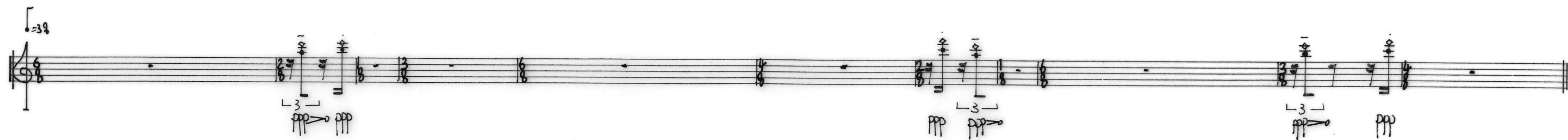
short sound and signal this is the final cue to end the piece.

# reassigned #1 (2016)

[violin]

James Saunders

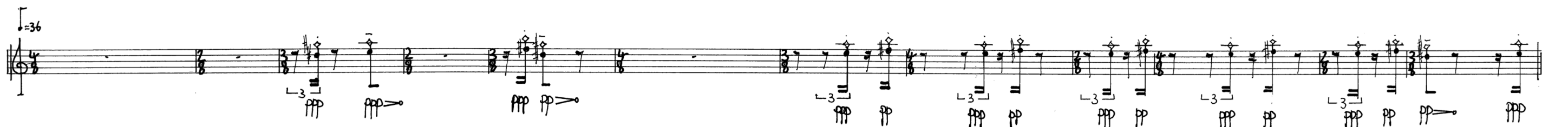
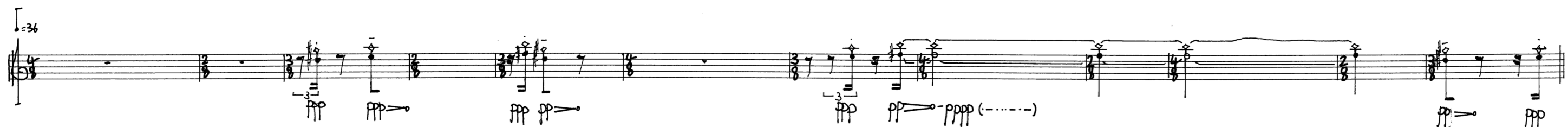
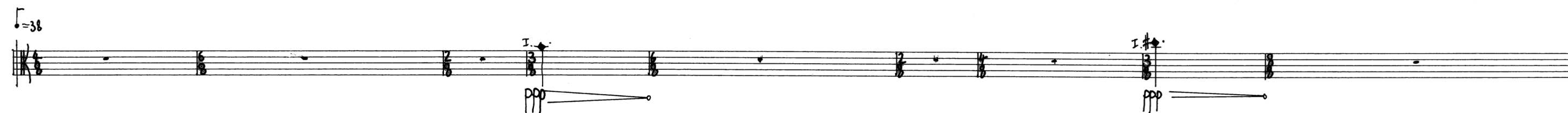




# reassigned #1 (2016)

[viola]

James Saunders



Handwritten musical notation on a single staff. It begins with a treble clef and a key signature of one sharp (F#). The tempo is marked as ♩ = 38. The notation includes various chords, some with first and second endings indicated by '1.' and '2.'. There are also dynamic markings such as *ppp* and *pp* with hairpins, and some notes are marked with a tilde (~). The piece concludes with a double bar line.

Handwritten musical notation on a single staff, featuring a 4/8 time signature. The notation includes rests and chords. Dynamic markings *ppp* are present with accents and hairpins. First endings are marked with 'I.'. The piece ends with a double bar line.

Handwritten musical notation on a single staff. It starts with a treble clef and a key signature of one sharp (F#). The tempo is marked as ♩ = 36. The notation includes chords, some with first and second endings ('1.', '2.'), and dynamic markings like *ppp* and *pp* with hairpins. There are also triplet markings (3) over some chords. The piece ends with a double bar line.

Handwritten musical notation on a single staff, featuring a 4/8 time signature. The notation includes rests and chords. Dynamic markings *ppp* are present with accents and hairpins. First endings are marked with 'I.'. There are also triplet markings (3) over some chords. The piece ends with a double bar line.

Handwritten musical notation on a single staff, featuring a 4/8 time signature. The notation includes rests and chords. Dynamic markings *ppp* are present with accents and hairpins. First endings are marked with 'I.'. The piece ends with a double bar line.

# reassigned #1 (2016)

[cello]

James Saunders

