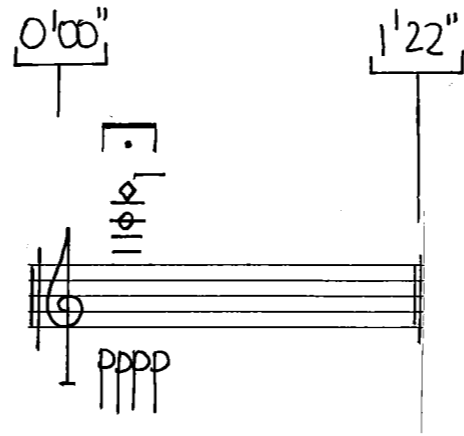


#[unassigned]

James Saunders

> violin

[version for Apartment House, Oslo]



1'25" 1'28"

Musical score for the first system, spanning measures 1 to 8. The score includes two staves: the top staff for the bow and the bottom staff for the fingerboard. Above the bow staff, bowing techniques are indicated: 'br.', 'bat.', 'triat.', 'triat: bat.', 'bat+triat', 'bat.', 'bat', 'bat+triat', 'bat.', and 'triat'. Above the fingerboard staff, rhythmic values are written: $\frac{1}{32}$, $\frac{3}{8}$, $\frac{4}{16}$, $\frac{1}{16}$, $\frac{2}{16}$, $\frac{1}{16}$, $\frac{4}{16}$, $\frac{1}{16}$, $\frac{4}{16}$, and $\frac{3}{8}$. A box labeled 'COL LEGNO' is placed above the first two measures. Dynamics include 'p', 'pp', 'p>pp', and 'ppp'. A 'Bow' label is in the left margin. The system ends with a double bar line and a '36"' marking.

-5-

2'06" 2'10"

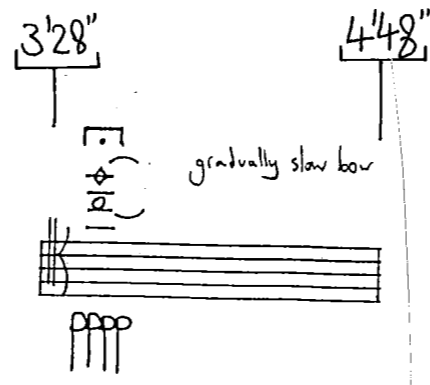
Musical score for the second system, spanning measures 9 to 18. The score includes two staves: the top staff for the bow and the bottom staff for the fingerboard. Above the bow staff, bowing techniques are indicated: 'bat.', 'triat.', 'triat.', 'bat.', 'triat.', 'triat bat', 'triat bat', 'triat bat', and 'bat.'. Above the fingerboard staff, rhythmic values are written: $\frac{2}{32}$, $\frac{3}{32}$, $\frac{2}{32}$, $\frac{4}{32}$, $\frac{3}{32}$, $\frac{7}{32}$, $\frac{3}{32}$, $\frac{2}{32}$, $\frac{4}{32}$, $\frac{10}{32}$, $\frac{3}{32}$, $\frac{2}{32}$, $\frac{4}{32}$, $\frac{1}{32}$, $\frac{11}{32}$, and $\frac{2}{32}$. A box labeled 'COL LEGNO' is placed above the first two measures. Dynamics include 'ppp'. The system ends with a double bar line and a '53"' marking.

9'37" 9'43"

Handwritten musical score for the first system. The piano part is in treble clef with a key signature of one flat and a tempo of quarter = 41. The left hand part is in bass clef with a key signature of one flat. The score includes various rhythmic markings such as 1/16, 4/16, 3/32, 1/16, 3/16, 1/16, 2/16, 3/8, 1/16, and 3/4. It also features dynamic markings like f, mf, and ppp, and articulation marks like accents and slurs. The system ends with a double bar line and a 54'' time signature.

10'43" 10'46"

Handwritten musical score for the second system. The piano part is in treble clef with a key signature of one sharp and a tempo of quarter = 56. The score includes various rhythmic markings such as 3/32, 5/16, 2/16, 3/8, and 1/16. It also features dynamic markings like ppp and articulation marks like accents and slurs. The system ends with a double bar line and a 18'' time signature.



5'35" 5'38"

3/32 2/16 3/8 2/8 3/32 1/16 3/16 4/16 3/32 3/16

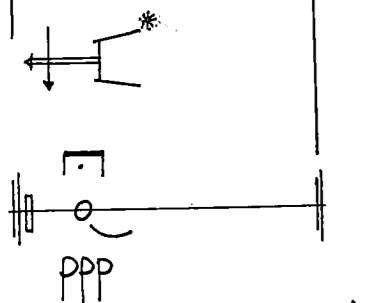
6'06" 6'08"

1/16 3/32 1/16 4.5"

6'35" 6'38"

1/16 3/32 6/16 1/16 2/16 1/16

8'41" 9'58"



*lift spike off of the ground.
bow near the end or do
not damp strings.

10'22" 10'25"

2/8 1/16 1/8 3/8 1/16

* * * or * stop string at indicated pitch (or harmonic) and damp string with remaining fingers on nut side.

[11'16"]

#[unassigned]

> electric guitar

[version for Apartment House, Oslo]

James Saunders

0'25" 0'30"

1'11" 2'23"

2'36" 2'43"

4'08 4'15"

4/16

1/16 4/16

2/16 4/16

3/16 4/16

4'33 5'23
ppp (<->) breathe through nose as required.

[WITH FOOT VOLUME PEDAL]

29"

5'49 5'54

2/16 1/16 4/16

3/16 1/16 2/16 4/16

3/16 1/16 4/16

2/16 3/16

[WITH FOOT PEDAL]

25"

6'20 6'24

3/16 6/16

1/16 2/16 4/16

2/16 6/16

28"

6'56

E-BOW: ②

8'27"

10'37 10'43

2/16 1/16 6/16

1/16 4/16

1/16 18"

#[unassigned]

James Saunders

> viola

[version for Apartment House, Oslo]

0'30" 0'35"

3/32 1/16 4/16 2/16 1/16 6/16 3/16 1/16

1'11" 1'16"

2/16 3/32 1/16 4/16 3/16 1/16 3/16

br. fb. bal → frat. frat → bat

2'06" 3'03"

tailpiece

pppp (<=>)

* always aim for quietest possible continuous sound, but do not worry if sound starts & stops.

3'55" 4'05" 4'08 4'43"

bic lid

ppp [breathe through nose as required]

6/16 1/16 2/16 3/16 8/16 1/16 3/16

CON SORD

5'23" 5'28"

Handwritten musical notation for the first system, featuring a treble clef, a key signature of one flat, and a 7/7 time signature. The notation includes a long horizontal line with a fermata, followed by several measures of music with various rhythmic values (3/8, 1/16, 3/32) and dynamic markings like 'ppp' and 'sfz'.

5'54" 5'59"

Handwritten musical notation for the second system, featuring a treble clef, a key signature of one flat, and a 7/4 time signature. The notation includes several measures of music with various rhythmic values (3/16, 1/32, 1/16, 2/16, 4/16, 1/16, 3/32, 2/16, 3/32, 1/16, 3/32) and dynamic markings like 'sfz'.

6'25" 6'30"

Handwritten musical notation for the third system, featuring a treble clef, a key signature of one flat, and a 6/7 time signature. The notation includes several measures of music with various rhythmic values (2/16, 3/16, 2/16, 1/16, 4/16, 6/16, 1/16, 3/32, 2/16, 1/16) and dynamic markings like 'pizz', 'Arco', and 'mf'.

9'58"

11'16"

Handwritten musical notation for the fourth system, featuring a treble clef, a key signature of one flat, and a 6/7 time signature. The notation includes a long horizontal line with a fermata and dynamic markings like 'ppp'.

4'28" 4'33" PRACTISE MUT6

4/16

4'43" bickid pppp (< >)
[breathe through nose as required]

5'38" [MUT6 OFF]

$f=102$

5'50" 5'54"

2/16 1/16 3/32 1/16 3/16 2/16 1/32 3/16

$f=100$

6'08" 6'10"

3/32 1/16 4/16

Azz

3/16 4/16

Alco I

3/32 4/16

3/32 3/32

Alco II

1/32

$f=56$

6'53" 7'34"

PI22

$f=56$

pppp

(barely audible)

repeat as needed (~ x24)