

certain elements within that situation remained constant (2011)

James Saunders

## programme note

---

*certain elements within that situation remained constant* (2011) is scored for guitar, melodica, bass clarinet and double bass. A constant drone is offset by unstable tones played at regularly repeating intervals. The title is taken from Bridget Riley's *Untitled Statement* (c.1968). The piece is part of the series *divisions that could be autonomous but that comprise the whole* (2009- ) and was written for Travis Just.

## performance information

---

steel string guitar, ebow (sounds one octave lower)  
melodica  
bass clarinet (concert pitch)  
double bass

o-pppp (----)    on the edge of silence; sound will stop and start uncontrollably; all sounds should be unstable throughout, and prone to breaking up

times refer to durations of sounds and silences (no action marked)

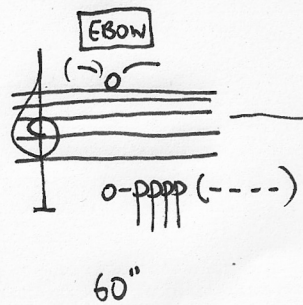
guitar	play a constant drone throughout (page repeats, no breaks)
others	play each page twice (total 7') or four times (total 14'); pages may be played in any order; a different order for each player

use a stopwatch

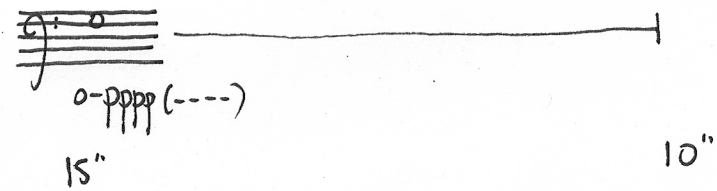
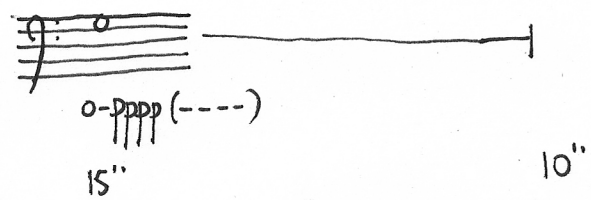
duration: 7'00" or 14'00"

*certain elements within that situation remained constant* was written for Travis Just.

guitar

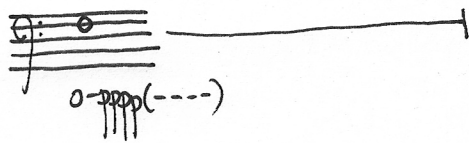


bass clarinet (1)



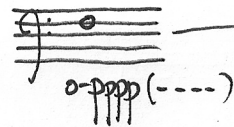


bass clarinet (2)



15"

10"



15"

20"

10"

bass clarinet (3)

10"

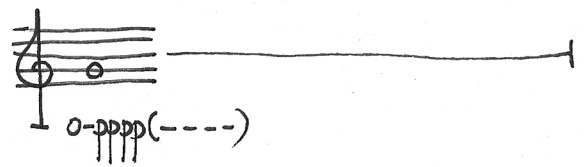
15"

10"

15"

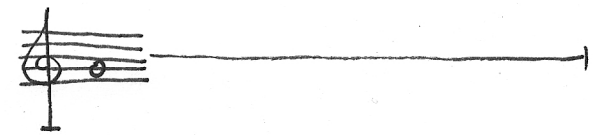
30"

15"



15"

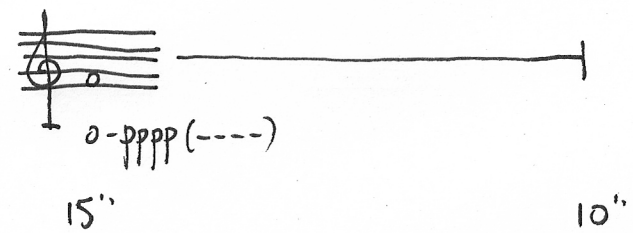
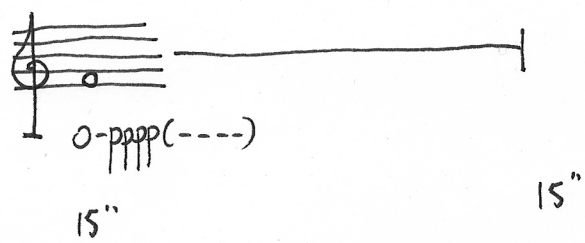
15"



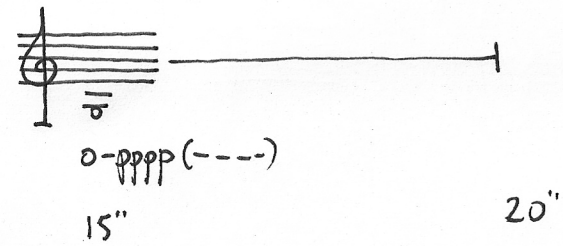
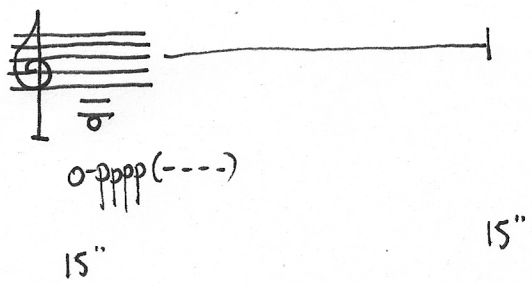
15"

melodica (2)

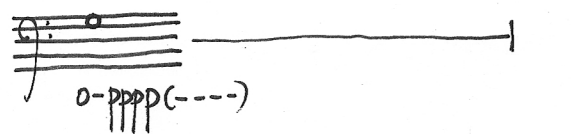
15"



15"



double bass (1)



5"

15"

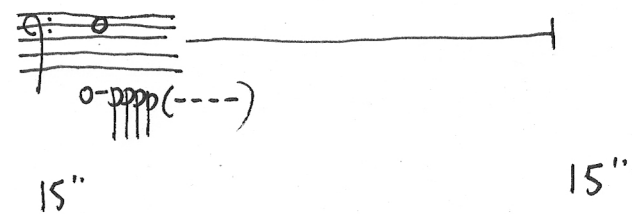
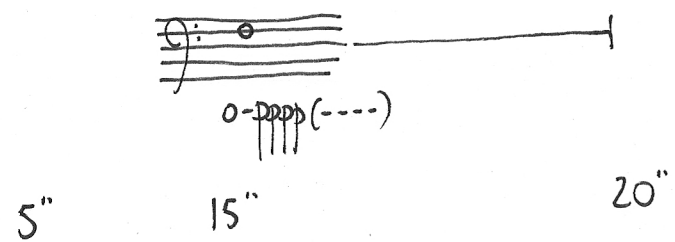
20"



15"

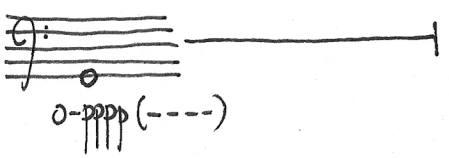
5"

double bass (2)



double bass (3)

5"      15"      20"



15"      25"

